

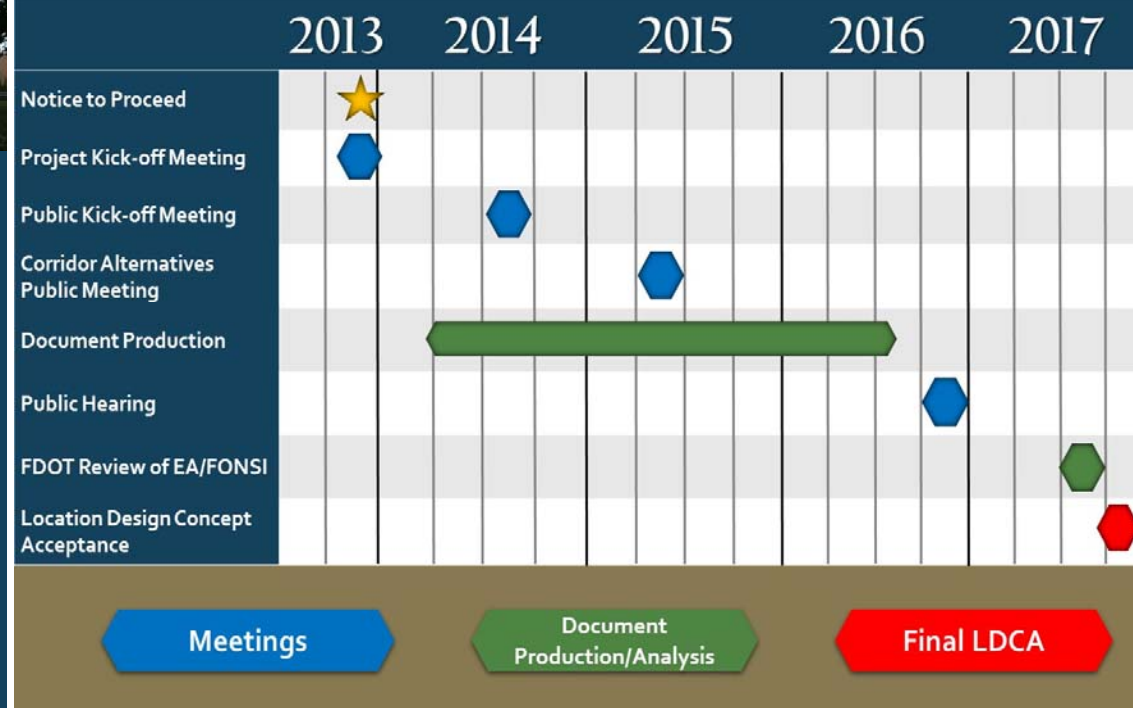


**U.S. 90
PD&E
Study**



Issue 01
January 2015

Schedule



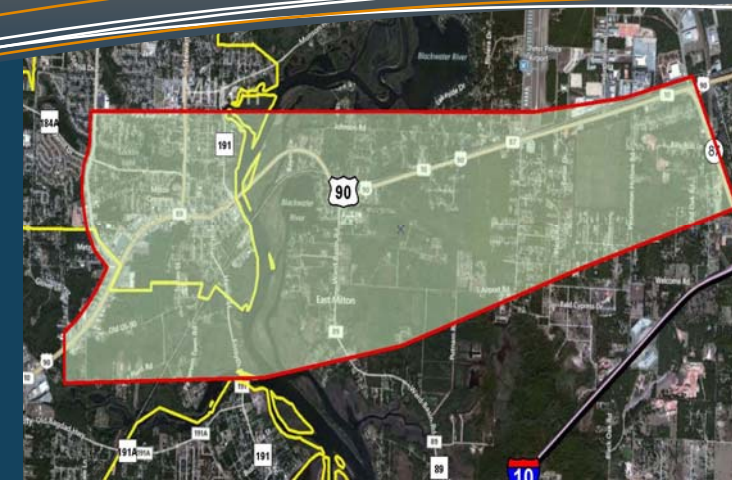
Florida Department of Transportation
District Three
1074 Highway 90
Chipley, FL 32428
Tel: 850-638-0250

ISSUE

01

January 2015

U.S. 90 PD&E Study



this issue

- PD&E Study Begins **P.1**
- What is a PD&E Study **P.1**
- Project Purpose **P.2**
- Public Involvement Begins **P.3**
- Schedule **P.4**

Special Points of Interest:

- Kick-off Meeting was held on July 15, 2014 at the Santa Rosa County Auditorium
- Corridor Alternatives Public Meeting tentatively scheduled for July 2015
- Project website to keep you informed and up-to-date is available at:

www.nwflroads.com/US90PDE



Financial Project Number:
416748-4-22-03



U.S. 90 PD&E Study Begins

We are pleased to inform you that the Florida Department of Transportation (FDOT) is performing a Project Development and Environment (PD&E) Study to evaluate the need for increasing the capacity for the east-west travel demands in the vicinity of the U.S. 90 corridor in Milton. The study area limits for this project are Glover Lane at U.S. 90 to State Road (S.R.) 87 South at U.S. 90. This area also extends as far north as Park Avenue on the west side of the Blackwater River, and Johnson Road on the east side of the river. The southern boundary of the study area extends south to Old Highway 90 west of the Blackwater River, and to South Airport Road on the east side of the river.

What is a PD&E Study?

The PD&E Study process is an integrated work effort involving engineering analysis and environmental evaluation, all accomplished within the context of a public participation program. The study process begins with a gathering of data and a refinement of the project needs and objectives. Public involvement during this phase of the study includes introductory briefings with elected officials, distribution of project fact sheet/newsletter, notification to key stakeholders, news releases to the media, and a series of public meetings to engage and collect feedback from the public. The traffic engineering analysis for this project will determine the need for a new four-lane facility, a new two-lane facility that would be phased into a four-lane facility, or to widen the existing two-lane portions of U.S. 90 to at least four lanes. This study will evaluate corridors and alignments that could accommodate a multi-lane roadway with bicycle and pedestrian features. The goal of this PD&E Study is to develop a proposed improvement strategy that is technically sound, environmentally sensitive and publicly acceptable. These improvements are necessary to alleviate the traffic congestion during high traffic periods, and to provide the public with a safer, more efficient transportation corridor.

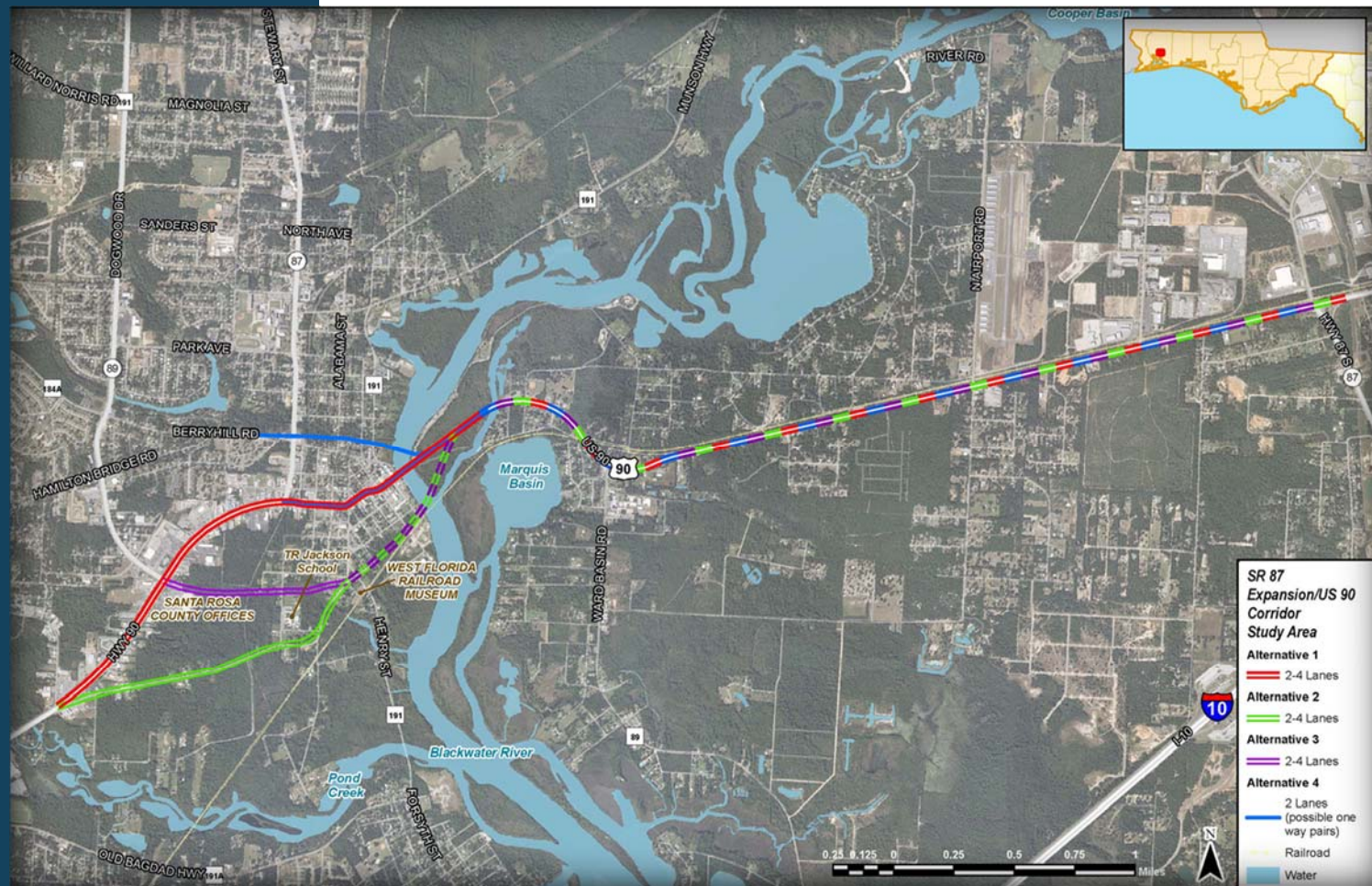
Transportation Project Development Process



PROJECT PURPOSE

The Florida Department of Transportation, District Three, has undertaken this PD&E Study to develop a roadway alignment that will increase the capacity for the east-west travel demands in the vicinity of the U.S. 90 corridor, and reduce traffic and congestion within the city of Milton.

There are five alternatives; the No Build (or no action) Alternative and four Build Alternatives. The No Build Alternative will remain a viable alternative throughout this study. All of the potential Build alternatives for this project will include improving U.S. 90 from east of the Blackwater River Bridge to S.R. 87 South. Alternative 1, reflected as the red line on the illustration, also studies widening the existing U.S. 90 roadway through Milton. Alternative 2, in green, studies improving Old Highway 90 and Baldwin Street, and follows along the railroad to the crossing of Blackwater River. Alternative 3, in purple, studies a connection at U.S. 90 and S.R. 89 (or Dogwood Drive), continuing just north of TR Jackson Pre-K School, then again following Baldwin Street to parallel the railroad. Alternative 4, in blue, studies a possible roadway north of Berryhill Road and the Milton Historic District. It should be noted that until the traffic model is complete, the study team has not determined if these alternatives will be two or four lanes, or will include one-way routing.



PUBLIC INVOLVEMENT BEGINS

As part of this study, a comprehensive public involvement program will be conducted. The program consists of formal and informal meetings with the general public, governmental agencies, elected officials and other interested parties. Public participation is solicited without regard to race, color, national origin, age, sex, religion, disability or family status. Persons who require special accommodations under the Americans with Disabilities Act or persons who require translation services (free of charge) should contact Peggy Kelley, FDOT Project Manager, toll-free at (888) 638-0250, extension 1517.

Elected Officials Kick-off Meetings

The Public Involvement efforts began with Elected Officials kick-off meetings. The City of Milton, City Council meeting was held June 10, 2014, Florida-Alabama TPO June 11, 2014, and the Santa Rosa County Board of County Commissioners June 26, 2014. At these meetings, FDOT representatives provided a brief overview of the project's purpose and need, known issues, and the project's schedule. Information regarding preliminary corridors were also provided to the elected officials for comments and suggestions.

Public Kick-off Meeting

FDOT Representatives held a public kick-off meeting July 15, 2014 at the Santa Rosa County Auditorium. Information was presented regarding the project purpose including the need for more capacity for the east-west travel demands. This kick-off meeting was held to familiarize the public with the study limits and provide an opportunity for comment and input. Over 120 members from the surrounding community attended the meeting.

Upcoming Events

A Corridor Alternatives Public Meeting is tentatively scheduled for July 2015. Please refer to the website for additional information at www.nwflroads.com/US90PDE regarding public involvement activities. Notices for future meetings will also be mailed in advance to elected and local officials, and affected public.

We encourage you to participate in the U.S. 90 PD&E study and invite your questions and comments. If you have any concerns regarding this project or would like to schedule a meeting, please contact:

FDOT District Three
Peggy Kelley
Project Manager
1074 Highway 90
Chipley, FL 32428
850-638-0250, ext. 1517
peggy.kelley@dot.state.fl.us



FDOT District Three
Ian Satter
Public Information Director
1074 Highway 90
Chipley, FL 32428
850-638-0250, ext. 1205
ian.satter@dot.state.fl.us

Please Visit Our Website

www.nwflroads.com/US90PDE

This website will be updated throughout this project. Project data will be added to the list found under Project Resources. Not only will the schedule and public notices be included, but project documents, meeting handouts, etc. will also be added as they are developed.



We value your
input!

This PD&E Study will incorporate the National Environmental Policy Act (NEPA).