

PROJECT OVERVIEW

The general objective of this PD&E Study is to provide and document information necessary for the FDOT to reach a decision on the type, design and location of improvements for a SR 87 Connector. The project limits include the intersection of SR 87 South and Bent Tree Road, westward to the intersection of US 90 / SR 10 and Glover Lane, and northwardly to the intersection of SR 87 North and Southridge Drive in Santa Rosa County, Florida.



PROJECT WEBSITE

www.sr87connector.com

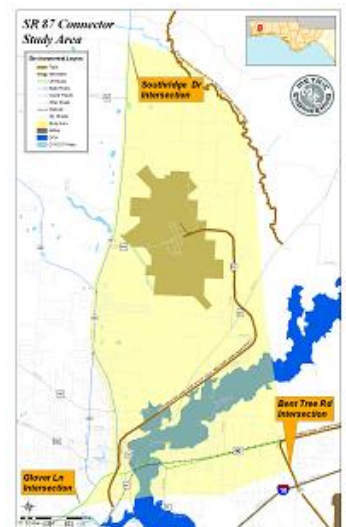
PROJECT STATUS

An analysis was completed for the portion of Alternative 2 (which was shifted north) to determine if the new location would impact any environmentally sensitive sites. The Draft Environmental Impact Statement (DEIS) and any affected support documents were updated to include this analysis. Due to the shift, the project's evaluation matrix was updated, which resulted in Alternative 2 performing better than Alternative 1. The project team submitted the Final Environmental Impact Statement/Record of Decision (FEIS/ROD) to FHWA for review and comment. FHWA's review has been finalized and the document was signed on October 20, 2016. The Location Design Concept Acceptance for this project has been awarded. The Design phase is planned for fiscal year 2019. As of December 2016, there is no funding for the Construction phase of this project through the year 2040.

STUDY PROCESS

This study will consider those engineering services required for location/design studies including consideration of all social, economic, environmental effects, and mitigation as required by the Federal Highway Administration (FHWA) and/or the PD&E/ETDM Guidelines, along with the required environmental documents, engineering, reports, preliminary plans and public involvement.

All alternatives will be subjected to a comprehensive evaluation to determine the best viable option. Engineering, environmental, socioeconomic factors and costs will be considered in arriving at a preferred alternative. The approach to this project will be to thoroughly assess the safety, mobility and community needs of the corridor, develop alternatives to address those needs, and evaluate them according to regulatory agency requirements, and community values. As part of this study and of the alternative selection process, a comprehensive public involvement program will be conducted.



PROJECT OVERVIEW

WHAT IS A PD&E STUDY?

The PD&E Study process is an integrated work effort involving engineering analysis and environmental evaluation, all accomplished within the context of a public participation program. The study process begins with a gathering of data and a refinement of the project needs and objectives. Public involvement during this phase of the study includes introductory briefings with elected officials with the distribution of a project fact sheet/newsletter, notification to key stakeholders, news releases to the media, and a series of public meetings to engage and collect feedback from the public. This project will first need to go through ETDM screening to expand the area that was evaluated in the Project # 2861 Screening Report published on February 19, 2008. Although both SR 87 North (to Langley Street) and SR 87 South are four or five-lane facilities, the traffic demand modeling for this project will determine the need for a four-lane facility, or a two-lane facility that would be phased into a four-lane facility. In any event, the study will evaluate corridors and alignments that could accommodate a four-lane facility. The goal of this PD&E Study is to develop a proposed improvement strategy that is technically sound, environmentally sensitive and publicly acceptable. These improvements are necessary to alleviate the traffic congestion during high traffic periods and to provide the public with a safer, more efficient roadway facility. The general content of this study is briefly described below.

- **Public Participation:** The public participation effort is woven throughout the study process and involves a series of public meetings and a continuing process of public outreach and information gathering. Public participation techniques are discussed more thoroughly in the subsequent sections.
- **Data Assembly:** This process will involve assembly of all relevant roadway data, completion of R/W survey, collection of traffic data and completion of the environmental field survey effort.
- **Conceptual Design Analysis:** This work effort will include analysis of different improvement configurations.
- **Engineering Analysis and Concept Plans:** All preliminary engineering analysis requirements are completed and a conceptual set of project plans is prepared.
- **Environmental Analysis and Reports:** All environmental impact analysis and associated memos or reports are prepared in draft form.
- **Comparative Analysis:** A comparative analysis matrix is prepared assessing the benefits and impacts associated with the no-build alternative, the Transportation System Management alternative and the build alternatives.
- **Draft Reports:** A Draft Preliminary Engineering Report (PER) and draft environmental documents will be assembled in preparation for the final public hearing.
- **Final Documents:** The PER and the appropriate environmental documents are finalized following the public hearing.

PROJECT OVERVIEW

HISTORY, PURPOSE & NEED

Presently, SR 87 is the main north-south artery of Santa Rosa County, Florida. It links Milton at US 90 with US 98 in Navarre to the south and Alabama (transitions to Alabama 41 en route to Brewton then on to I-65) to the north. It also serves as a corridor for freight movement north to I-65 as well as a vital evacuation route for northbound traffic. During times of hurricane force winds, both the Escambia Bay Bridge and the Garcon Point Bridge close, leaving SR 87 north to the interstate and beyond not only the single access out of the beach areas like Gulf Breeze and Navarre, but it is the only access into the area for Emergency First Responders.

However, with a portion of the current alignment traveling along a congested section of US 90 through historic downtown Milton, it cannot function as a contiguous roadway. Future growth will continue to constrain this portion of the corridor. Santa Rosa County has grown 173% since 1980 and is expected to grow another 92% by 2030. This increase will put further demand on this roadway, making growth and evacuation difficult due to a lack of capacity on US 90. As a result, Santa Rosa County's Capital Improvements Schedule includes Policy 4.1.E.3, "The County shall continue to request, recommend, and support immediate roadway improvements in order to relieve the congestion on the segment of US 90 between Canal Street and SR 87S".

The primary objectives in the extension of SR 87 South is to facilitate a more effective freight movement and hurricane evacuation route from the coast, reduce congestion in the City of Milton, and to alleviate travel demand on US 90. The study will focus on addressing transportation needs as it relates to:

- Improving mobility,
- Relieving traffic congestion and improving traffic circulation,
- Improving upon pedestrian and bicycle connectivity,
- Providing efficient access to/from the beach (SR 87 is also an important Hurricane Evacuation Route), and
- Providing for and ensuring public safety, while protecting the environment.

PUBLIC INVOLVEMENT

The Florida Department of Transportation (FDOT) recognizes that the success of any transportation improvement is dependent upon a successful public outreach effort. As such, FDOT is committed to conducting a public involvement program that focuses on soliciting community interaction and incorporates an extensive evaluation of community impacts and opinions throughout the public involvement process. It is believed that the positive value of implementing a strong public involvement effort is that will result in public awareness of, and support for, the project.

The Public Involvement Plan will be updated and amended throughout the project development process to incorporate the latest public involvement policies and techniques as they evolve during the life of the project. The plan illustrates the project's public involvement approach and generally lists the contact

PROJECT OVERVIEW

persons: officials, agencies, interested parties, and media; as well as the means used to involve them in the process. The Department will prepare responses to the public inquiries as a result of the public involvement efforts and the collection of public input will occur throughout the project duration.

The Public Involvement Plan for the State Road (SR) 87 Project Development and Environment (PD&E) Study is in compliance with the PD&E Guidelines, Florida Statutes (F.S.) Sections 286.0105 and 286.011 and 339.155, Executive Orders 11990 and 11988, Council of Environmental Quality (CEQ) Regulations for Implementing the Procedural Provisions of the National Environmental Policy Act (NEPA), the Efficient Transportation Decision Making (ETDM Planning and Programming) Manual and Department of Transportation Order 5610.1C, and Parts 23 and 40 of the Code of Federal Regulations (CFR).

Public participation is solicited without regard to race, color, national origin, age, sex, religion, disability or family status. Persons who require special accommodations under the Americans with Disabilities Act or persons who require translation services (free of charge) should contact [Peggy Kelley, FDOT Project Manager](#), toll-free at (888) 638-0250, extension 1517.

MEETINGS

- **Public Hearing**
November 13, 2014
5:30 PM to 6:30 PM CST
First Assembly of God Gymnasium
6163 Dogwood Drive, Milton, Florida
- **Alternatives Public Workshop**
August 16, 2011 -- 5 PM to 6 PM CST
Santa Rosa County Auditorium
4530 Old Bagdad Highway, Milton, Florida
- **Corridor Public Meeting**
January 27, 2011 -- 5 PM to 6 PM CST
Santa Rosa County Auditorium
4530 Old Bagdad Highway, Milton, Florida
- **Public Kickoff Meeting**
March 23, 2010 -- 5 PM to 6 PM CST
Santa Rosa County Auditorium
4530 Old Bagdad Highway, Milton, Florida
- **Florida – Alabama TPO Meeting**
March 20, 2010 -- 9 AM CST
Escambia County BOCC Chambers
221 Palafox Place, Pensacola, Florida
- **Milton City Council Meeting**
March 9, 2010 -- 5 PM CST
City Hall
6738 Dixon Street, Milton, Florida
- **Santa Rosa County Commission Meeting**
February 25, 2010 -- 9 AM CST
6495 Caroline Street, Milton, Florida

For information regarding additional public involvement opportunities, please visit the [FDOT Public Notices website](http://www2.dot.state.fl.us/publicsyndication/PublicMeetings.aspx/publicmeetings_district3) at http://www2.dot.state.fl.us/publicsyndication/PublicMeetings.aspx/publicmeetings_district3.

PROJECT OVERVIEW

PROJECT CONTACTS

- **Peggy Kelley**
FDOT Project Manager
SR 87 Connector PD&E Study
Florida Department of Transportation
Post Office Box 607 – 1074 Highway 90
Chipley, Florida 32428
850-330-1517
peggy.kelley@dot.state.fl.us
- **Ian Satter**
District Public Information Director
Florida Department of Transportation
Post Office Box 607 – 1074 Highway 90
Chipley, Florida 32428
850-330-1205
ian.satter@dot.state.fl.us